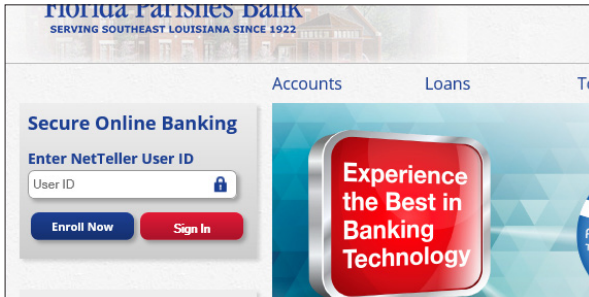


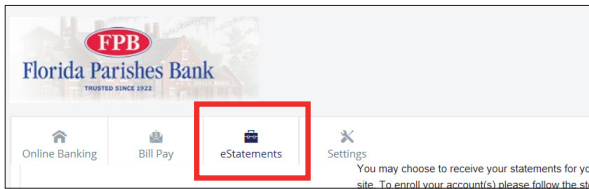


Florida Parishes Bank
SERVING SOUTHEAST LOUISIANA SINCE 1922

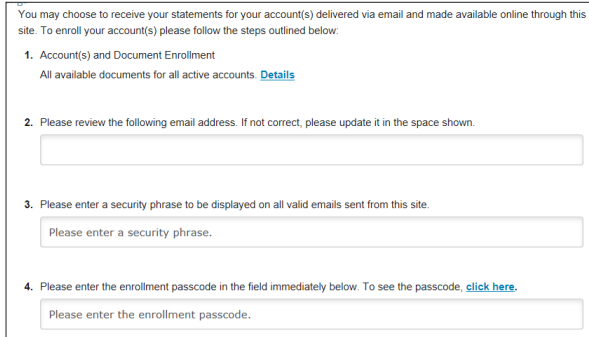
E-Statement SIGN UP INSTRUCTIONS



First, login to your Online Banking. You can do so from the Florida Parishes Bank website, on the left side under “Secure Online Banking”.

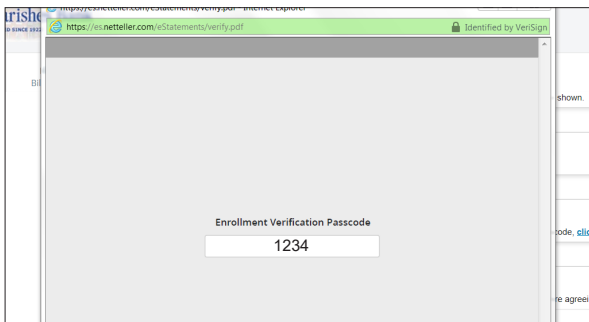


Once logged in, select ‘eStatements’ at the top of the toolbar.



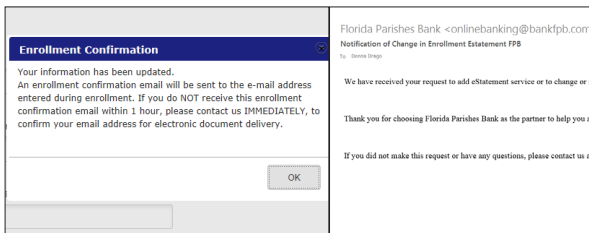
You’ll be taken to a small form that needs filling out. Verify your email address. If corrections are needed, please make the necessary changes.

Next, you will create a security phrase. This phrase will be listed on all future e-statement emails. Only open e-statement emails that list that code.



Finally, click the “click here” portion of question 4. to generate a passcode in a popup window. Type that passcode for the answer to 4 to proceed.

Not getting a passcode? Make sure you can get popups on the website and try again.



Once you’ve done all the steps, click ‘submit’. You will receive a message like the one you see here. It states that there will be a confirmation email coming in soon. Once you have the email, you’re good! We’ll do the rest.

If you do not receive the email within one hour, contact us immediately at 985 345 BANK